



Southern Iowa  
Electric Cooperative

A Touchstone Energy® Cooperative



April 2024



**Our mission: Providing Safe, Reliable Electricity**

Office: 22458 Highway 2, PO Box 70

Bloomfield, IA 52537-0070

Phone: 641-664-2277 or 800-607-2027

**Phone Payments: 800-927-5341**

Report Outages: 800-607-2027

Call Before You Dig: 800-292-8989

Website: [www.sie.coop](http://www.sie.coop)

Office Hours: Mon.-Fri. 8:00am-4:30pm

Closed Saturdays, Sundays and Holidays

**Management:**

Greg Proctor, CEO/General Manager

Ross Hunter, COO/Systems Analyst

Lindsay Smith, Office Services/Accounting Mgr.

Kelly Moore, Human Resources Manager

**Board of Directors:**

Darrell Downing, President      Trent Gregory

Travis Harris, Vice President      Rodney Reck

Earl Trachsel, Secretary      Susan Knapp

Dave Yahnke, Treasurer      Jason Wells

Ryan Davis

**What to Do in Case of Trouble:**

\*Check for blown fuses or tripped breakers.

\*Check with neighbors and ask if their electricity is off and if they have reported the outage. If not, call Southern Iowa Electric Cooperative and report the problem 24 hours a day at 641-664-2277 or 800-607-2027.

**Service Charges:**

Bill Collection.....\$50      Disconnect.....\$50

Posting.....\$50      Returned Check.....\$30

Reconnect.....\$75      Trip Charge.....\$50

Meter Tampering.....\$150

Be sure to notify our office if ANY of your contact information has changed. It's important that we can contact you if needed, and be able to get capital credits to you.

## National Safe Digging Month

**CALL 811  
BEFORE  
YOU DIG**

Digging without locating underground utilities could leave neighborhoods in the dark, cause thousands of dollars in damages or cause severe electrical shock.



**Safe  
Electricity.org®**

MORE INFO  
[Call811.com](http://Call811.com)



## Revolving Loan Fund

### Supporting Local Growth & Development

SIEC is community connected and dedicated to helping ensure the long-term viability of the rural economy. With this goal in mind, we offer the SIEC Revolving Loan Fund (RLF). The RLF can provide funds for any community or economic development project that benefits our rural area.

**Who is eligible?**

- New or expanding private businesses
- Not-for-profit entities
- City or County Governments

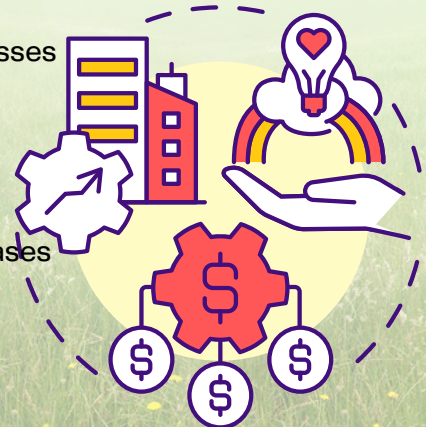
**What are eligible uses of funds?**

- Land purchases
- Machinery and equipment purchases
- Fixed assets
- Buildings

**Ineligible uses of funds:**

- Speculation land purchases
- Payments to owners or equity investors
- Debt refinancing
- Projects that lack economic development potential

**Call 641-664-2277 with inquiries**





# THANK YOU!



Linemen (left to right): Mike McCoy, Kevin Bulechek, Tim Hamburg, Bryce Burnett, Ian Truitt, Scott Johnson, Logan Brassfield, Cody Bellon, Cody Pickens, Troy Weber, Brian Roberts and Travis Hall

Our linemen play a crucial role in ensuring that our communities have access to safe and reliable electricity. These skilled professionals work diligently to install, maintain, and repair electrical power systems, often working in challenging conditions, to keep the lights on for our members. With their expertise and dedication, they help to power our world and keep us connected. Their commitment to safety and efficiency ensures that we can rely on our electrical infrastructure day in and day out. They are often the unsung heroes who work behind the scenes to keep our lives running smoothly.



Congratulations **Travis Hall** on achieving the distinction as a Certified Loss Control Professional by the National Rural Electric Cooperative Association (NRECA) and Wisconsin School of Business Center for Professional and Executive Development. Your dedication, commitment to safety, and leadership will continue to prove of high value to the safety culture at SIEC. Travis, who joined our team in 2019, has worked diligently to also achieve the status of Journeyman Line Technician and has actively pursued a business degree through courses taken at Indian Hills Community College. Keep up the great work in fulfilling our responsibilities to the Membership of SIEC! ~ Greg Proctor, SIEC Manager

**9 Million:** Miles of wire in service in the U.S.

**30 lbs:** Approx. weight of tools & equipment worn by lineworkers



**LINEWORKERS  
POWER OUR LIVES!**

**170 Million:** Wood poles in service in the U.S.

**155 Million:** Electric customers in the U.S.

**1905:** Hot sticking began ~ **1915:** Barehanding began ~ **1920s:** Rubber gloving started

## On-Call Dispatch During Outages

Spring is approaching and with it comes the potential for severe weather and storms. When large outages occur, SIEC may have to temporarily switch our phones over to our On-Call Dispatch Service during regular business hours. This is due to the high call volume during large outages. When this is necessary, you will not be talking directly to a local SIEC employee. SIEC's On-Call Dispatch Service is very proficient in getting critical outage information to our Operations staff so they can effectively dispatch crews in the safest and quickest means possible to get your power restored. Please know we value our members and your calls are very important to us, especially during outages. We appreciate your understanding when this is necessary for us to do.

